



2020



1:32
precision in detail

1:32



Hochwertige Sammlermodelle im exakten Maßstab 1:32

Ziel unserer Marke ist es, unseren Kunden exklusive Sammlerstücke in hochwertiger Ausführung anzubieten. Im engen Kontakt mit dem Sammler ist uns dessen Leidenschaft nicht verborgen geblieben, mit der er sein Hobby pflegt. Dieser Begeisterung begegnen wir mit gleicher Leidenschaft und haben die Absicht, unverwechselbare Miniaturen zu schaffen. Auf dem Weg dahin müssen die Modelle nicht nur aktuellen Fertigungs-Standards genügen, genauso sollen ihnen ausgesuchte Details in der Ausstattung den Charakter unverwechselbarer Miniaturen verleihen.

Es liegt in der Natur der Sache, dass Sammler-Wünsche sehr persönlichen Interessen folgen und wir nur einen Bruchteil dessen umsetzen werden, was uns in der Summe mitgeteilt wird. Technische Voraussetzungen des Zink-Spritzguss-Verfahrens setzen Grenzen, so dass Detail-Lösungen für das Modell gefunden werden müssen im Unterschied zum originalen Vorbild. Die konkrete Entscheidung für ein zukünftiges Modell-Projekt hängt natürlich von einer Reihe weiterer, praktischer Notwendigkeiten ab, denen wir zu folgen haben. Wir werden alle Modell-Vorschläge sammeln, und es bleibt unsere Aufgabe zu prüfen, ob und inwieweit wir diese in unsere strategischen Planungen mit einfließen lassen können.

Wir möchten uns an dieser Stelle für die zahlreichen Hinweise bedanken, die wir in den letzten Jahren erhalten haben und freuen uns auf weitere Rückmeldungen. Denn: wir sind auch in der Zukunft stets an der Meinung des Sammlers interessiert.

Besuchen Sie auch unsere Internetpräsenz www.weise-toys.de und informieren Sie sich stets über unsere Neuheiten.

Ihr **weise-toys** Team

High-quality collector's models in exact scale 1:32

The aim of our brand is to offer our customer selected collector's items in high-quality execution. Keeping in close contact with the collector's whose passion has continued and grown, as they add to their collection and pursue their hobby. We meet this enthusiasm with the same passion and follow our intention making distinctive miniatures. The model construction uses contemporary manufacturing standards, at the same time all selected details in the equipment should add to the character of these distinctive miniatures.

It is natural that collector's wishes will follow very personal interests and we will realize only parts of all we are informed by our customers. Technical conditions of the zinc die-casting procedure set limits, so that detailed solutions must be found for the model may be opposed to the original model. The concrete decision for a future model project depends of course on a row of other, practical needs which we have to follow. We will collect all model proposals, and there remains our job to check whether and to what extent we can allow to flow in this onto our strategically planning with.

We would like to say many thanks for the numerous tips which we have received during the last years and we will be happy with all feedback in the future. Because we are always interested in the opinion of the farm-model collector.

Visit our website www.weise-toys.de and inform yourself about our weise-toys news.

Your **weise-toys** team



copyright by Tim Heinz (www.Trecker-Tim.de.tl)

1:32



1001 FENDT FAVORIT 514 C (1995 - 1999) GTIN 42 60146070008

- tinted glasses
- hinged rear-view mirrors
- amber beacon rotatable to raised position (working position)
- flexible roof-top antenna
- detailed cabin interior with high levelled and brightly coloured decoration
- reasonable working front- and rear linkage
- brass-metal upper link adjustable for length with 6 mm (rotating top-link)
- front linkage with 2 lower-links to be fold in upright position (road safety)
- rear linkage with locking system to hold it in raised position (secure transport-position for implements)
- tires with licensed manufacturer's engraving 'Michelin'
- accessory: A-frame, front-weight part, draw-bar



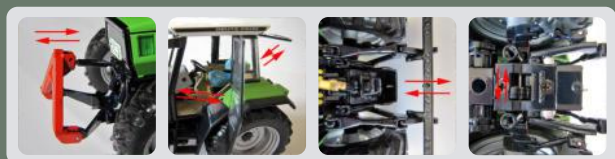
1004 Schlüter Super Trac 2000 TVL (1981 - 1986) GTIN 42 60146070053

- movable engine-cover
- exhaust stack with pivoting rain-cover
- high detailed reproduction of the 200 hp, 8-cylinder Schlueter-engine
- tiltable cabin (by hydraulic at the original tractor)
- 2 movable sliding doors
- detailed cabin interior with high levelled and brightly coloured decoration
- rear linkage with brass-metal upper link, adjustable for length with 6 mm (rotating top-link)
- rear linkage with locking system to hold it in raised position (secure transport-position for implements)
- flexible hydraulic-tubes
- tires with licensed manufacturer's engraving 'Klüber'
- realistic chassis frame with all visible technical details
- accessory: front-weight as a unit of 6 Schlueter front-weights (Schlueter-'bananas'), draw-bar



1020 DEUTZ-FAHR AgroStar DX 6.31 (1990 - 1993) GTIN 42 60146070305

- licence-plates (front/rear) 'ST SC 762'
- transparent head- and working-lights, rear lights inserted
- movable doors and rear window
- hinged rear-view mirrors
- detailed cabin interior with high levelled and brightly coloured decoration
- reasonable working front- and rear linkage
- brass-metal upper link adjustable for length with 6 mm (rotating top-link)
- rear linkage with locking system to hold it in raised position (secure transport-position for implements)
- tires with licensed manufacturer's engraving 'Klüber'
- accessory: A-frame, draw-bar



1:32



1025 FENDT FAVORIT 926 Vario (1996 - 2000) GTIN 42 60146070411

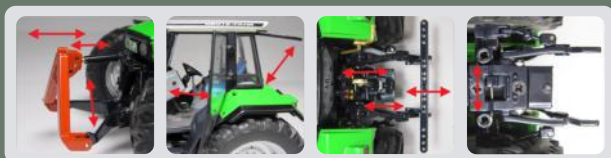
- licence-plates (front/rear) 'UN NE 24'
- tinted glasses, transparent head- and working-lights, rear lights inserted
- movable doors, hinged rear-view mirrors
- amber beacon rotatable to raised position (working position)
- flexible roof-top antenna
- exhaust stack with pivoting rain-cover
- detailed cabin interior with high levelled and brightly coloured decoration
- reasonable working front- and rear linkage
- brass-metal upper link adjustable for length with 6 mm (rotating top-link)
- front linkage with 2 lower-links to be fold in upright position (road safety)
- rear linkage with locking system to hold it in raised position (secure transport-position for implements)
- pivoting holder for the front- and rear upper link
- tires with licensed manufacturer's engraving 'Michelin'
- accessory: A-frame, front-weight



copyright by Tim Heinz (www.Trecker-Tim.de.tl)

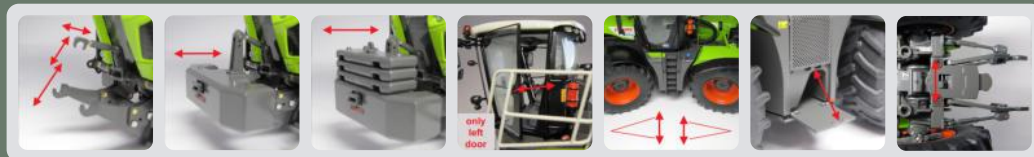
1028 DEUTZ-FAHR AgroStar 6.38 (1993 - 1995) GTIN 42 60146070503

- licence-plates (front/rear) 'GT BL 48'
- transparent head- and working-lights, rear lights inserted
- movable doors and rear window
- hinged rear-view mirrors
- detailed cabin interior with high levelled and brightly coloured decoration
- reasonable working front- and rear linkage
- brass-metal upper link adjustable for length with 6 mm (rotating top-link)
- rear linkage with locking system to hold it in raised position (secure transport-position for implements)
- tires with licensed manufacturer's engraving 'Klüber'
- accessory: A-frame, draw-bar



1030 CLAAS XERION 4000 SADDLE TRAC (2013 -)
GTIN 42 60146070527

- licence-plates (front/rear) 'GT CL 7039'
- tinted glasses
- transparent head- and working-lights, rear lights inserted
- movable left door
- hinged rear-view mirrors
- 2 amber beacon
- detailed cabin interior with high levelled and brightly coloured decoration
- reasonable working front- and rear linkage
- brass-metal upper link adjustable for length with 6 mm (rotating top-link)
- rear linkage with locking system to hold it in raised position (secure transport-position for implements)
- independent steering front- and rear axle
- realistic chassis frame with all visible technical details
- tires with licenced manufacturer's engraving 'TRELLEBORG'
- accessory: front-weight part, 3 additional weight-parts (attachable on top of the front weight part)



1033 MB-trac 900 turbo (W440) (1987 - 1991)
GTIN 42 60146070619

- colour: light-green / olive-green
- licence-plates (front/rear) 'UN NP 651'
- transparent head-lights inserted
- movable doors
- flexible roof-top antenna
- detailed cabin interior with high levelled and brightly coloured decoration
- reasonable working front- and rear linkage
- brass-metal upper link adjustable for length with 6 mm (rotating top-link)
- rear linkage with locking system to hold it in raised position (secure transport-position for implements)
- tires with licensed manufacturer's engraving 'Kléber'
- accessory: A-frame, draw-bar

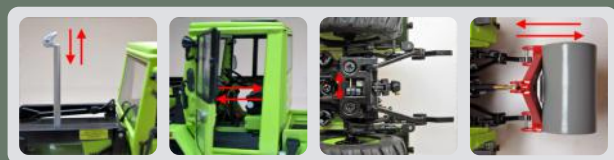


1:32



1038 MB-trac 900 (W440) with front-loader (1981 - 1982)
GTIN 42 60146070787

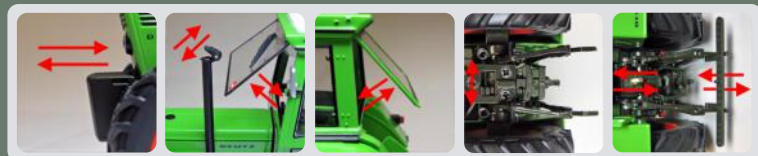
- colour: light yellow-green / black
- licence-plates (front/rear) 'SO VD 204'
- transparent head-lights inserted
- movable doors
- exhaust stack with pivoting rain-cover
- detailed cabin interior with high levelled and brightly coloured decoration
- rear cover part movable / detachable
- reasonable working rear linkage
- brass-metal upper link adjustable for length with 6 mm (rotating top-link)
- rear linkage with locking system to hold it in raised position (secure transport-position for implements)
- tires with licensed manufacturer's engraving 'Continental'
- front-loader (type Stoll) with movable shovel
- accessory: draw-bar, rear-weight



copyright by Tim Heinz (www.Trecker-Tim.de.it)

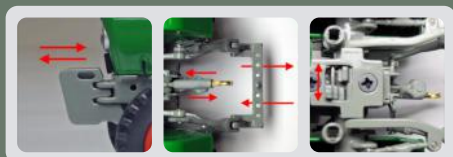
1039 DEUTZ D 80 06 (1974 - 1978)
GTIN 42 60146070794

- colour: DEUTZ green 74, chassis olive-green, wheel rim orange-red
- exhaust stack with pivoting rain-cover
- movable windshield and rear window
- detailed cabin interior with high levelled and brightly coloured decoration
- reasonable working rear linkage
- brass-metal upper link adjustable for length with 6 mm (rotating top-link)
- rear linkage with locking system to hold it in raised position (secure transport-position for implements)
- flexible hydraulic tubes for the hydraulic cylinder at the front-axle
- tires with licensed manufacturer's engraving 'Continental'
- accessory: 15 front-weight parts (built as a unit), draw-bar



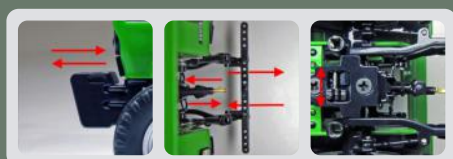
1040 DEUTZ D 40 06 (1968 - 1974) GTIN 42 60146070800

- colour: DEUTZ-green, chassis cement-grey, wheel rim orange-red
- licence-plates (front/rear) 'UN MS 341'
- transparent head-lights inserted
- reasonable working rear linkage
- brass-metal upper link adjustable for length with 6 mm (rotating top-link)
- rear linkage with locking system to hold it in raised position (secure transport-position for implements)
- tires with licensed manufacturer's engraving 'Continental'
- accessory: front-weight (11 front-weight parts built as a unit), draw-bar (short)



1041 DEUTZ D 52 06 (1978 - 1980) GTIN 42 60146070817

- colour: DEUTZ-green, chassis DEUTZ-blue, wheel rim silver
- licence-plates (front/rear) 'TE LL 5206'
- transparent head-lights inserted
- with cabin (type Fritzmeier)
- reasonable working rear linkage
- brass-metal upper link adjustable for length with 6 mm (rotating top-link)
- rear linkage with locking system to hold it in raised position (secure transport-position for implements)
- tires with licensed manufacturer's engraving 'Continental'
- accessory: front-weight (11 front-weight parts built as a unit), draw-bar



1042 Schlüter Super 1250 V (1968 - 1973) GTIN 42 60146070770

- colour: Schlüter-red, chassis silver
- movable engine-cover
- head-lights inserted
- exhaust stack with pivoting rain-cover
- reasonable working rear linkage
- brass-metal upper link adjustable to the length for 6 mm (rotating top-link)
- rear linkage with locking system to hold it in raised position (secure transport-position for implements)
- realistic chassis frame with all visible technical details
- tires with licensed manufacturer's engraving 'Continental'
- accessory: front-weight as a unit of 2 Schlüter front-weights (Schlüter-'bananas'), draw-bar



1:32



1043 MB-trac 1000 (W441) (1987 - 1991) GTIN 42 60146070824

- thistle-green metallic / bottle-green
- licence-plates (front/rear) 'R H 548'
- tinted glasses
- transparent head-, working- and rear lights inserted
- flexible roof-top antenna
- movable doors
- detailed cabin interior with high levelled and brightly coloured decoration
- reasonable working front- and rear linkage
- brass-metal upper link adjustable for length with 6 mm (rotating top-link)
- rear linkage with locking system to hold it in raised position (secure transport-position for implements)
- tires with licensed manufacturer's engraving 'Continental'
- accessory: front-bumper, front-triangle part, rear draw-bar attachable



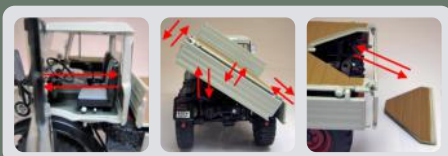
reissue



copyright by Tim Heinz (www.Trecker-Tim.de.tl)

1044 Unimog 406 (U84) closed cabin (1971 - 1989) GTIN 42 60146070831

- colour: pebble-grey / wheel rim carmine-red
- licence-plates (front/rear) 'ER UU 84'
- tiltable platform to the right side
- platform gates movable and detachable
- triangle cover part at flat-bed attachable
- movable doors
- transparent head-lights and rear lights inserted
- detailed cabin interior with high levelled and brightly coloured decoration
- both axles with spring suspension
- spare wheel at the left side
- tires with licensed manufacturer's engraving 'Continental'
- spare wheel at the left side
- accessory: platform cover part

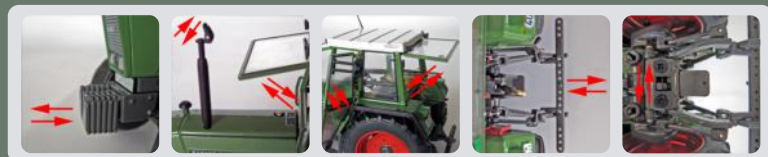


1:32



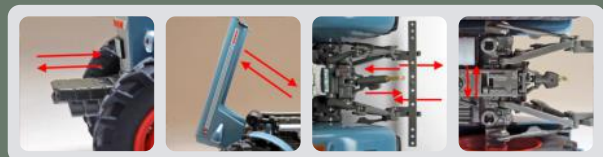
1047 FENDT FARMER 308 LSA (1984 - 1988) GTIN 42 60146070930

- licence-plates (front/rear) 'MOD E 308'
- transparent head- and working- lights, rear lights inserted
- movable doors
- movable wind-shield and rear window
- flexible roof-top antenna
- exhaust stack with pivoting rain-cover
- detailed cabin interior with high levelled and brightly coloured decoration
- reasonable working rear linkage
- brass-metal upper link adjustable for length with 6 mm (rotating top-link)
- rear linkage with locking system to hold it in raised position (secure transport-position for implements)
- tires with licensed manufacturer's engraving 'Continental'
- accessory: 6 front-weight parts (built as a unit), draw-bar



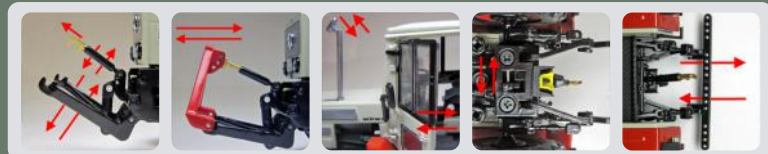
1049 EICHER WOTAN I (3018) (1968 - 1972) GTIN 42 60146070954

- licence-plates (front/rear) 'LIP BE 461'
- movable engine-cover
- transparent head-lights inserted
- reasonable working rear linkage
- brass-metal upper link adjustable for length with 6 mm (rotating top-link)
- rear linkage with locking system to hold it in raised position (secure transport-position for implements)
- tires with licensed manufacturer's engraving 'Continental'
- accessory: front-weight (4 single-weight parts built as a unit), draw-bar



1051 MB-trac 800 (W440) (1975 - 1979) GTIN 42 60146070985

- colour: pebble-grey / fire-red
- licence-plates (front/rear) 'LP MB 800'
- transparent head-lights inserted
- exhaust stack with pivoting rain-cover
- movable doors
- detailed cabin interior with high levelled and brightly coloured decoration
- reasonable working front- and rear linkage
- brass-metal upper link adjustable for length with 6 mm (rotating top-link)
- rear linkage with locking system to hold it in raised position (secure transport-position for implements)
- tires with licensed manufacturer's engraving 'Continental'
- accessory: A-frame, draw-bar

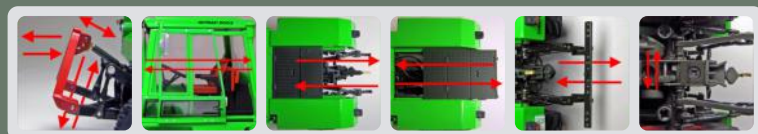


1:32



1052 DEUTZ INTRAC 2003 A (1974 - 1978) GTIN 42 60146071005

- colour: DEUTZ-green 74
- licence-plates (front/rear) 'NOH D 68'
- transparent head- and working- lights, rear lights inserted
- movable sliding door (left)
- detailed cabin interior with high levelled and brightly coloured decoration
- reasonable working front- and rear linkage
- brass-metal upper link adjustable for length with 6 mm (rotating top-link)
- rear linkage with locking system to hold it in raised position (secure transport-position for implements)
- tires with licensed manufacturer's engraving 'Continental'
- accessory: A-frame, draw-bar



copyright by Tim Heinz (www.Trecker-Tim.de.tl)

1053 DEUTZ-FAHR 6185 TTV Agrottron (2016 -) GTIN 42 60146070992

- licence-plates (front/rear) 'DLG DF 618'
- movable driver's door, skylight and rear window
- tinted glasses
- transparent head- and working- lights, rear lights inserted
- hinged rear view mirrors
- 1 amber beacon rotatable to raised position (working position)
- detailed cabin interior with high levelled and brightly coloured decoration
- reasonable working front- and rear linkage
- brass-metal upper link adjustable for length with 6 mm (rotating top-link)
- front linkage with 2 lower-links to be fold in upright position (road safety)
- rear linkage with locking system to hold it in raised position (secure transport-position for implements)
- tires with licensed manufacturer's engraving 'TRELLEBORG'
- accessory: A-frame, front-weight



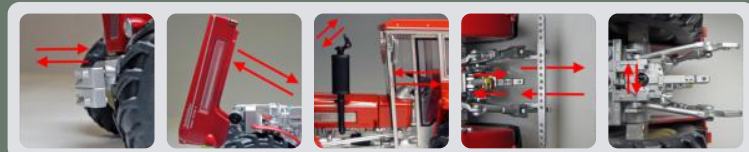
1054 DEUTZ D 52 07 A (1980 - 1984) GTIN 42 60146071050

- colour: DEUTZ-green 74, chassis DEUTZ-blue, wheel rim silver
- licence-plates (front/rear) 'SO WZ 129'
- transparent head-lights inserted
- with canopy top (type Fritzmeier)
- moveable windscreen
- moveable left door
- reasonable working rear linkage
- brass-metal upper link adjustable for length with 6 mm (rotating top-link)
- rear linkage with locking system to hold it in raised position (secure transport-position for implements)
- tires with licensed manufacturer's engraving 'Continental'
- accessory: front-weight (11 front-weight parts built as a unit), draw-bar



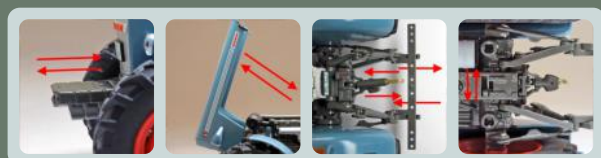
1055 Schlüter Super 1250 V with half-cabin (1968 - 1973) GTIN 42 60146071067

- colour: Schlüter-red
- movable engine-cover
- head-lights inserted
- exhaust stack with pivoting rain-cover
- movable sliding doors
- reasonable working rear linkage
- brass-metal upper link adjustable to the length for 6 mm (rotating top-link)
- rear linkage with locking system to hold it in raised position (secure transport-position for implements)
- flexible hydraulic tubes for the hydraulic cylinder at the front-axle
- realistic chassis frame with all visible technical details
- tires with licensed manufacturer's engraving 'Continental'
- accessory: front-weight as a unit of 2 Schlüter front-weights (Schlüter-'bananas'), draw-bar



1056 EICHER WOTAN I (3018) with safety frame (type Fritzmeier) (1968 - 1972) GTIN 42 60146071074

- licence-plates (front/rear) 'LIP BE 461'
- movable engine-cover
- transparent head-lights inserted
- reasonable working rear linkage
- brass-metal upper link adjustable for length with 6 mm (rotating top-link)
- rear linkage with locking system to hold it in raised position (secure transport-position for implements)
- tires with licensed manufacturer's engraving 'Continental'
- accessory: front-weight (4 single-weight parts built as a unit), draw-bar

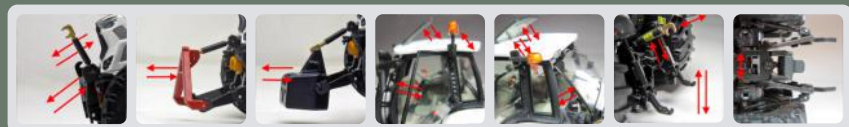


1:32



1057 Lamborghini Spark 165 RCShift (2017 -) GTIN 42 60146071111

- movable driver's door, skylight and rear window
- tinted glasses
- transparent head- and working- lights, rear lights inserted
- hinged rear view mirrors
- 1 amber beacon rotatable to raised position (working position)
- detailed cabin interior with high levelled and brightly coloured decoration
- reasonable working front- and rear linkage
- brass-metal upper link adjustable for length with 6 mm (rotating top-link)
- front linkage with 2 lower-links to be fold in upright position (road safety)
- rear linkage with locking system to hold it in raised position (secure transport-position for implements)
- tires with licensed manufacturer's engraving 'TRELLEBORG'
- accessory: A-frame, front-weight



copyright by Tim Heinz (www.Trecker-Tim.de/t)

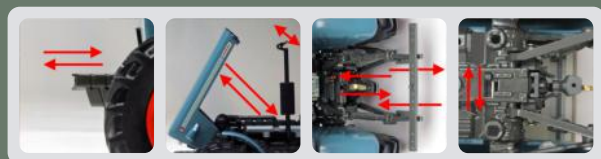
1059 FENDT FAVORIT 612 LSA (1988 - 1993) GTIN 42 60146071166

- licence-plates (front/rear) 'COE DH 635'
- movable doors, movable windshield and rear window
- exhaust stack with pivoting rain-cover
- transparent head- and working- lights, rear lights inserted
- flexible roof-top antenna
- detailed cabin interior with high levelled and brightly coloured decoration
- reasonable working rear linkage with locking system to hold it in raised position (secure transport-position for implements)
- brass-metal upper link adjustable for length with 6 mm (rotating top-link)
- flexible hydraulic tubes at the right side
- tires with licensed manufacturer's engraving 'Michelin'
- accessory: front-weight (6 front-weight parts built as a unit), draw-bar



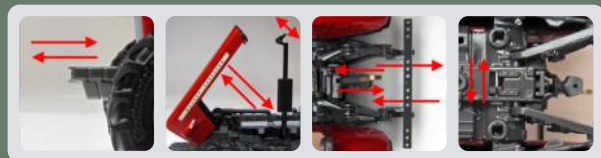
1060 EICHER WOTAN II (3014) (1968 - 1976)
GTIN 42 60146071173

- licence-plates (front/rear) 'UE T 565'
- movable engine-cover
- exhaust stack with pivoting rain-cover
- transparent head-lights inserted
- moveable windscreen
- reasonable working rear linkage with locking system to hold it in raised position (secure transport-position for implements)
- brass-metal upper link adjustable for length with 6 mm (rotating top-link)
- tires with licensed manufacturer's engraving 'Continental'
- accessory: front-weight (4 single-weight parts built as a unit), draw-bar



1061 MASSEY FERGUSON WOTAN II (1973 - 1976)
GTIN 42 60146071180

- licence-plates (rear) '3772 77'
- movable engine-cover
- exhaust stack with pivoting rain-cover
- transparent head-lights inserted
- reasonable working rear linkage with locking system to hold it in raised position (secure transport-position for implements)
- brass-metal upper link adjustable for length with 6 mm (rotating top-link)
- tires with licensed manufacturer's engraving 'Continental'
- accessory: front-weight (4 single-weight parts built as a unit), draw-bar



1062 MB-trac 1600 turbo (W443) (1987 - 1991)
GTIN 42 60146071197

- colour: light thistle-green metallic / bottle-green
- licence-plates (front/rear) 'R H 548'
- tinted glasses
- movable doors
- rear cover part movable / detachable
- flexible roof-top antenna
- detailed cabin interior with high levelled and brightly coloured decoration
- reasonable working front- and rear linkage
- front linkage with separated upper link placed in front of the front grid (transport position), attachable at the front linkage (working position)
- rear linkage with locking system to hold it in raised position (secure transport-position for implements)
- brass-metal upper link adjustable for length with 6 mm (rotating top-link)
- bracket for rear upper link
- tires with licensed manufacturer's engraving 'Continental'
- accessory: A-frame, front-bumper, draw-bar, 2nd front upper-link as spare-part



1:32



1063 FENDT FAVORIT 509 C (1994 - 2000)
GTIN 42 60146071210

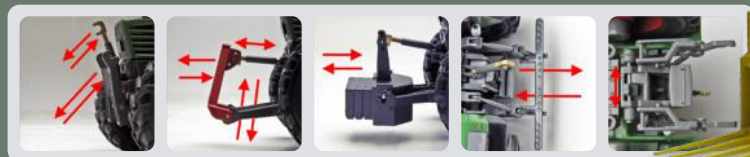
- licence-plates (front/rear) 'BOR BS 496'
- tinted glasses
- hinged rear-view mirrors
- amber beacon rotatable to raised position (working position)
- flexible roof-top antenna
- detailed cabin interior with high levelled and brightly coloured decoration
- reasonable working front- and rear linkage
- front linkage with 2 lower-links to be fold in upright position (road safety)
- rear linkage with locking system to hold it in raised position (secure transport-position for implements)
- brass-metal upper link adjustable for length with 6 mm (rotating top-link)
- tires with licensed manufacturer's engraving 'Michelin'
- accessory: A-frame, front-weight



copyright by Tim Heinz (www.Trecker-Tim.de/tl)

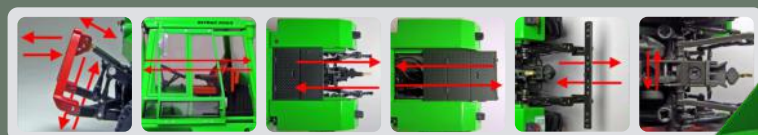
1064 FENDT FAVORIT 510 C with front-loader (1993 - 2000)
GTIN 42 60146071227

- licence-plates (front/rear) 'BOR AN 512'
- tinted glasses
- hinged rear-view mirrors
- amber beacon rotatable to raised position (working position)
- flexible roof-top antenna
- detailed cabin interior with high levelled and brightly coloured decoration
- reasonable working front- and rear linkage
- front linkage with 2 lower-links to be fold in upright position (road safety)
- rear linkage with locking system to hold it in raised position (secure transport-position for implements)
- brass-metal upper link adjustable for length with 6 mm (rotating top-link)
- tires with licensed manufacturer's engraving 'Michelin'
- fully functional front-loader part (type: FENDT) with parallel motion for the manure fork
- accessory: A-frame, front-weight



1065 DEUTZ INTRAC 2003 A with front-loader (1974 - 1978)
GTIN 42 60146071234

- licence-plates (front/rear) 'EMS AK 23'
- transparent head- and working- lights, rear lights inserted
- movable sliding door (left)
- detailed cabin interior with high levelled and brightly coloured decoration
- reasonable working front- and rear linkage
- rear linkage with locking system to hold it in raised position (secure transport-position for implements)
- brass-metal upper link adjustable for length with 6 mm (rotating top-link)
- tires with licensed manufacturer's engraving 'Continental'
- fully functional front-loader part (type: BAAS) with parallel motion for the bucket
- accessory: A-frame, draw-bar



new edition 2019

1066 Unimog 406 (U84) with soft-top (1971 - 1989)
GTIN 42 60146071272

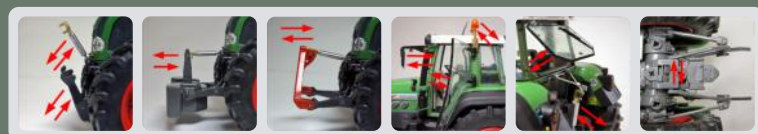
- colour: beige-grey
- licence-plates (front/rear) 'MM DA 367'
- detachable soft-top
- tiltable platform to the right side
- platform gates movable and detachable
- triangle cover part at flat-bed attachable, movable doors
- transparent head- and working-lights and rear lights inserted
- detailed cabin interior with high levelled and brightly coloured decoration
- reasonable working front- and rear linkage
- brass-metal upper link adjustable for length with 6 mm (rotating top-link)
- rear linkage with locking system to hold it in raised position (secure transport-position for implements)
- both axles with spring suspension
- tires with licensed manufacturer's engraving 'Michelin'
- accessory: A-frame, 2 draw-bar: short (front), long (rear)



new edition 2019

1067 FENDT FAVORIT 924 Vario (1999 - 2002)
GTIN 42 60146071289

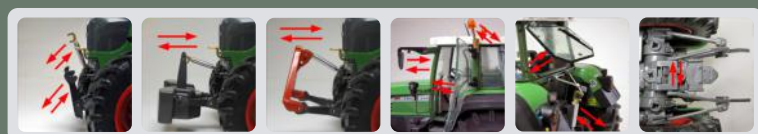
- licence-plates (front/rear) 'WAF DW 924'
- tinted glasses, transparent head- and working-lights, rear lights inserted
- movable doors, hinged rear-view mirrors
- 2 amber beacon rotatable to raised position (working position)
- flexible roof-top antenna
- exhaust stack with pivoting rain-cover
- detailed cabin interior with high levelled and brightly coloured decoration
- reasonable working front- and rear linkage
- brass-metal upper link adjustable for length with 6 mm (rotating top-link)
- front linkage with 2 lower-links to be fold in upright position (road safety)
- rear linkage with locking system to hold it in raised position (secure transport-position for implements)
- holder for the front upper link
- tires with licensed manufacturer's engraving 'TRELLEBORG'
- accessory: A-frame, front-weight



new edition 2019

1068 FENDT Vario 926 TMS (2002 - 2007)
GTIN 42 60146071296

- licence-plates (front/rear) 'WAF D 926'
- tinted glasses
- transparent head- and working-lights, rear lights inserted
- movable doors, hinged rear-view mirrors
- 2 amber beacon rotatable to raised position (working position)
- flexible roof-top antenna
- exhaust stack with pivoting rain-cover
- detailed cabin interior with high levelled and brightly coloured decoration
- reasonable working front- and rear linkage
- brass-metal upper link adjustable for length with 6 mm (rotating top-link)
- front linkage with 2 lower-links to be fold in upright position (road safety)
- rear linkage with locking system to hold it in raised position (secure transport-position for implements)
- tires with licensed manufacturer's engraving 'TRELLEBORG'
- accessory: A-frame, front-weight



new edition 2019



copyright by Tim Heinz (www.Trecker-Tim.de/tl)

1069 Schlüter Euro Trac 2000 LS (1993 - 1995)
GTIN 42 60146071302

- colour: Schlüter-red, chassis silver
- slidable ballast weight
- exhaust stack with pivoting rain-cover, tiltable cabin, sliding doors
- detailed cabin interior with high levelled and brightly coloured decoration
- instrument panel and driver's seat (as a unit) 180° rotatable (backward driving while working with implements) The function is shown at an enclosed instruction leaflet.
- reasonable working front- and rear linkage
- brass-metal upper link adjustable for length with 6 mm (rotating top-link)
- rear linkage with locking system to hold it in raised position (secure transport-position for implements)
- realistic chassis frame with all visible technical details
- tires with licensed manufacturer's engraving 'Kléber'
- accessory: front-bumper, front-triangle part, rear draw-bar attachable



new edition 2019

1070 FENDT FAVORIT 816 (1993 - 1996) GTIN 42 60146071319

- licence-plates (front/rear) 'COE U 787'
- tinted glasses, transparent head- and working-lights, rear lights inserted
- movable doors, hinged rear-view mirrors
- amber beacon rotatable to raised position (working position)
- flexible roof-top antenna
- exhaust stack with pivoting rain-cover
- detailed cabin interior with high levelled and brightly coloured decoration
- reasonable working front- and rear linkage
- brass-metal upper link adjustable for length with 6 mm (rotating top-link)
- front linkage with 2 lower-links to be fold in upright position (road safety)
- rear linkage with locking system to hold it in raised position (secure transport-position for implements)
- pivoting holder for the front- and rear upper link
- tires with licensed manufacturer's engraving 'Michelin'
- accessory: A-frame, front-weight

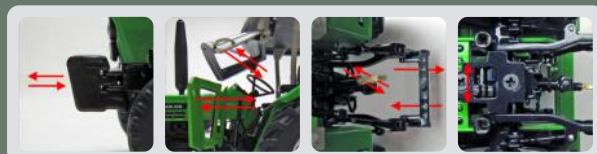


neu
new
2020



1071 DEUTZ D 45 06 (1978 - 1984) GTIN 42 60146071326

- colour: DEUTZ-green 74, chassis DEUTZ-blue, wheel-rim silver
- licence-plates (front/rear) 'SU HA 256'
- transparent head-lights inserted
- with canopy top (type Fritzmeier)
- moveable windscreen
- moveable left door
- reasonable working rear linkage
- brass-metal upper link adjustable for length with 6 mm (rotating top-link)
- rear linkage with locking system to hold it in raised position (secure transport-position for implements)
- tires with licensed manufacturer's engraving 'Continental'
- accessory: front-weight (11 front-weight parts built as a unit), draw-bar

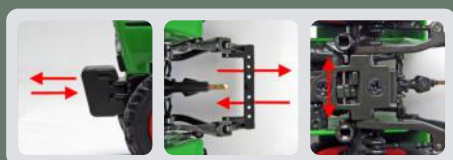


neu
new
2020



1072 DEUTZ D 52 06 A with front-loader (1974 - 1978) GTIN 42 60146071333

- colour: DEUTZ-green 74, chassis brown-green, wheel-rim orange-red
- licence-plates (front / rear) 'FS P 68'
- transparent head-lights inserted
- reasonable working rear linkage
- brass-metal upper link adjustable for length with 6 mm (rotating top-link)
- rear linkage with locking system to hold it in raised position (secure transport-position for implements)
- tires with licensed manufacturer's engraving 'Continental'
- front-loader (type Baas) with movable shovel
- accessory: front-weight (11 front-weight parts built as a unit), rear wheel-rim weight, draw-bar



neu
new
2020

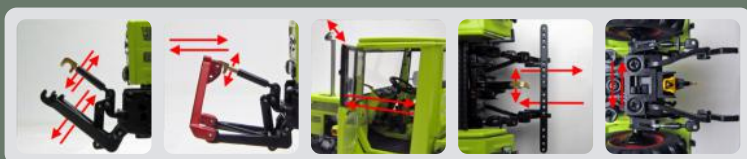


1:32



1073 MB-trac 800 (440) (1975 - 1979) GTIN 42 60146071340

- colour: light yellow-green, wheel-rim fire-red
- licence-plates (front/rear) 'RD SP 920'
- transparent head-lights inserted
- exhaust stack with pivoting rain-cover
- movable doors
- detailed cabin interior with high levelled and brightly coloured decoration
- reasonable working front- and rear linkage
- brass-metal upper link adjustable for length with 6 mm (rotating top-link)
- rear linkage with locking system to hold it in raised position (secure transport-position for implements)
- tires with licensed manufacturer's engraving 'Continental'
- accessory: A-frame, draw-bar



neu
new
2020



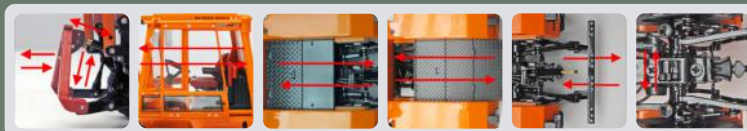
Weitere Neuheiten für 2020 kündigen wir zeitnah über unsere Internetseite www.weise-toys.de an.

Further new releases for 2020 will be promptly announced at our website www.weise-toys.de.

Autres nouvelles pour 2020 nous annoncent rapidement sur notre website www.weise-toys.de.

1109 DEUTZ INTRAC 2003 A Kommunal mit Frontlader (1974 - 1978) GTIN 42 60146071135

- municipal-colour: light-orange
- licence-plates (front/rear) 'SFA-623'
- transparent head- and working- lights, rear lights inserted
- movable sliding door (left)
- detailed cabin interior with high levelled and brightly coloured decoration
- reasonable working front- and rear linkage
- rear linkage with locking system to hold it in raised position (secure transport-position for implements)
- brass-metal upper link adjustable for length with 6 mm (rotating top-link)
- tires with licensed manufacturer's engraving 'Continental'
- fully functional front-loader part (type: BAAS) with parallel motion for the bucket
- accessory: A-frame, draw-bar



1110 MB-trac 700 K (W440) Kommunal (1987 - 1991)
GTIN 42 60146071142

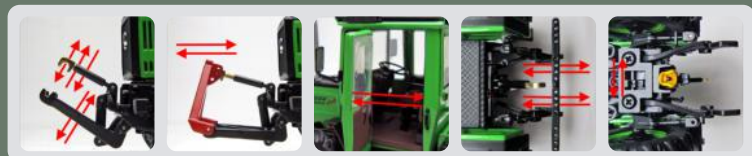
- municipal-colour: deep-orange
- licence-plates (front/rear) 'FN TG 185'
- transparent head-lights inserted
- movable doors
- flexible roof-top antenna
- 1 amber beacon
- detailed cabin interior with high levelled and brightly coloured decoration
- reasonable working front- and rear linkage
- rear linkage with locking system to hold it in raised position (secure transport-position for implements)
- brass-metal upper link adjustable for length with 6 mm (rotating top-link)
- tires with licenced manufacturer's engraving 'Continental'
- accessory: A-frame, draw-bar



2051 MB-trac 700 (W440) Family (1990 - 1991)
GTIN 42 60146071357

- colour: Family-green/black
- transparent head-lights inserted
- flexible roof-top antenna
- movable doors
- detailed cabin interior with high levelled and brightly coloured decoration
- reasonable working rear linkage
- brass-metal upper link adjustable for length with 6 mm (rotating top-link)
- rear linkage with locking system to hold it in raised position (secure transport-position for implements)
- tires with licenced manufacturer's engraving 'Continental'
- accessory: A-frame, front-bumper, draw-bar

limitierte edition: 500 pieces - in a yellow-green package



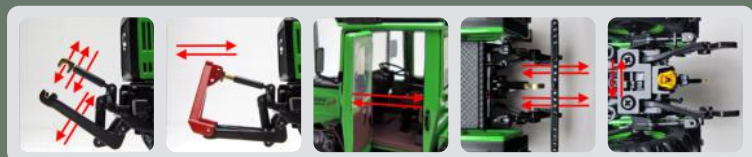
neu
new
2020



2052 MB-trac 800 (W440) Family (1990 - 1991)
GTIN 42 60146071364

- colour: Family-green/black
- transparent head-lights inserted
- flexible roof-top antenna
- movable doors
- detailed cabin interior with high levelled and brightly coloured decoration
- reasonable working rear linkage
- brass-metal upper link adjustable for length with 6 mm (rotating top-link)
- rear linkage with locking system to hold it in raised position (secure transport-position for implements)
- tires with licenced manufacturer's engraving 'Continental'
- accessory: A-frame, front-bumper, draw-bar

limitierte edition: 500 pieces - in a yellow-green package



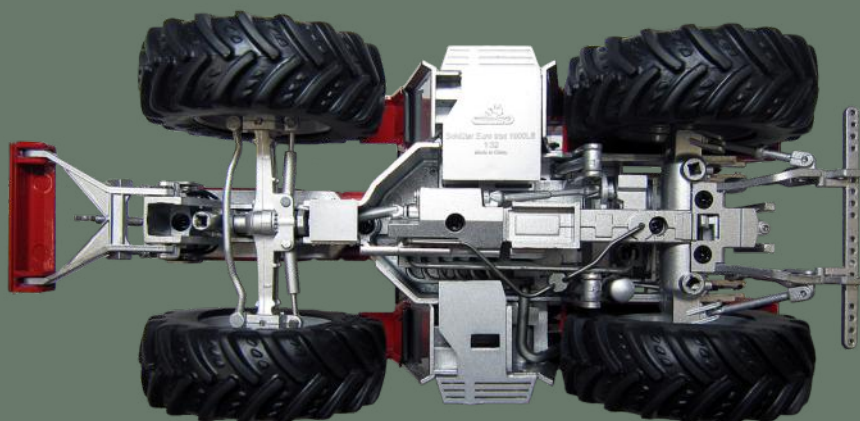
neu
new
2020



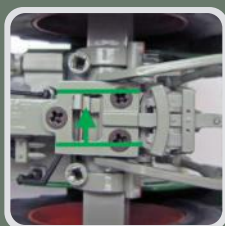
1069 Schlüter Euro Trac 2000 LS



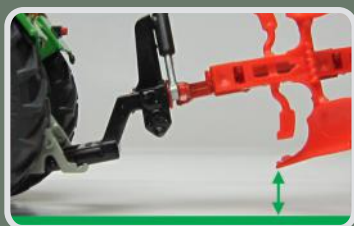
Side view with advanced ballast weight, open sliding door and tilted cab.



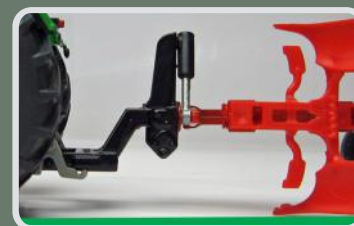
Bottom view with detailed chassis, with inserted bumper and draw-bar.



Position 1: Transport position
Adjusting lever on the underside of the model locks the lower links so that attachments can be held securely.



Position 2: Working position
Adjusting lever on the underside of the model releases the lower links so that implements can reach the ground.



Hergestellt unter Lizenz der / Manufactured under licence of / Fabriqué sous licence de:
Hergestellt unter der Lizenz der CLAAS Service and Parts GmbH s Verwendung der Marke CONTINENTAL mit freundlicher Genehmigung der Continental AG s Markenzeichen SAME, DEUTZ, Lamborghini benutzt unter Lizenz der SAME DEUTZ-FAHR Group S.p.A. s Verwendung der Marke EICHER mit freundlicher Genehmigung der Eicher Vertriebs GmbH s FENDT is a worldwide brand of AGCO. Produced under licence from AGCO International GmbH s Trademark Kleber is used under licence from Michelin Group Companies s Trademark Landini is used under licence of ARGO TRACTORS S.p.A. s Trademark Massey Ferguson is used under licence of AGCO Corporation s 'Mercedes Benz', and the design of the enclosed product are subject to intellectual property protection owned by Daimler AG. They are used by Weise GmbH & Co. KG under licence s Trademark MICHELIN is used under licence from Michelin Lifestyle Ltd. s Trademark NOKIAN mit freundlicher Genehmigung der Nokian Heavy Tyres Ltd. s Verwendung der Schlüter-Markenzeichen mit freundlicher Genehmigung der Profi Gigant GdbR s Verwendung der Marke Trelleborg mit freundlicher Genehmigung von Trelleborg Wheel Systems Germany GmbH s weise-toys is a registered Trademark by Weise GmbH & Co. KG, 59357 Werne.